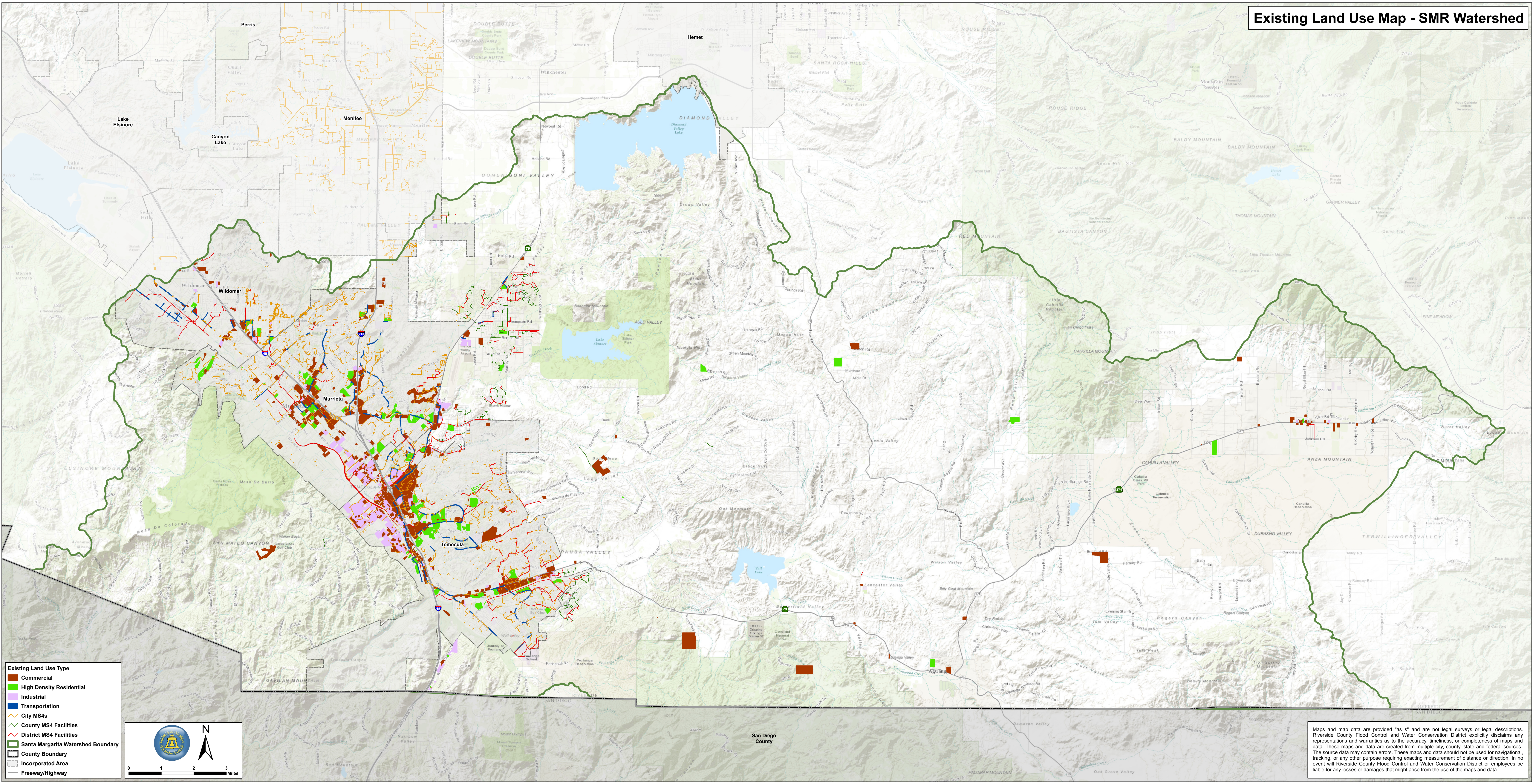


Existing Land Use Map - SMR Watershed



Existing Land Use Type

- Commercial
- High Density Residential
- Industrial
- Transportation
- City MS4s
- County MS4 Facilities
- District MS4 Facilities
- Santa Margarita Watershed Boundary
- County Boundary
- Incorporated Area
- Freeway/Highway

0 1 2 3 Miles

San Diego County

Maps and map data are provided "as-is" and are not legal surveys or legal descriptions. Riverside County Flood Control and Water Conservation District explicitly disclaims any representations and warranties as to the accuracy, timeliness, or completeness of maps and data. These maps and data are created from multiple city, county, state and federal sources. The source data may contain errors. These maps and data should not be used for navigational, tracking, or any other purpose requiring exacting measurement of distance or direction. In no event will Riverside County Flood Control and Water Conservation District or employees be liable for any losses or damages that might arise from the use of the maps and data.